

HSF

TECHNICAL SPECS:

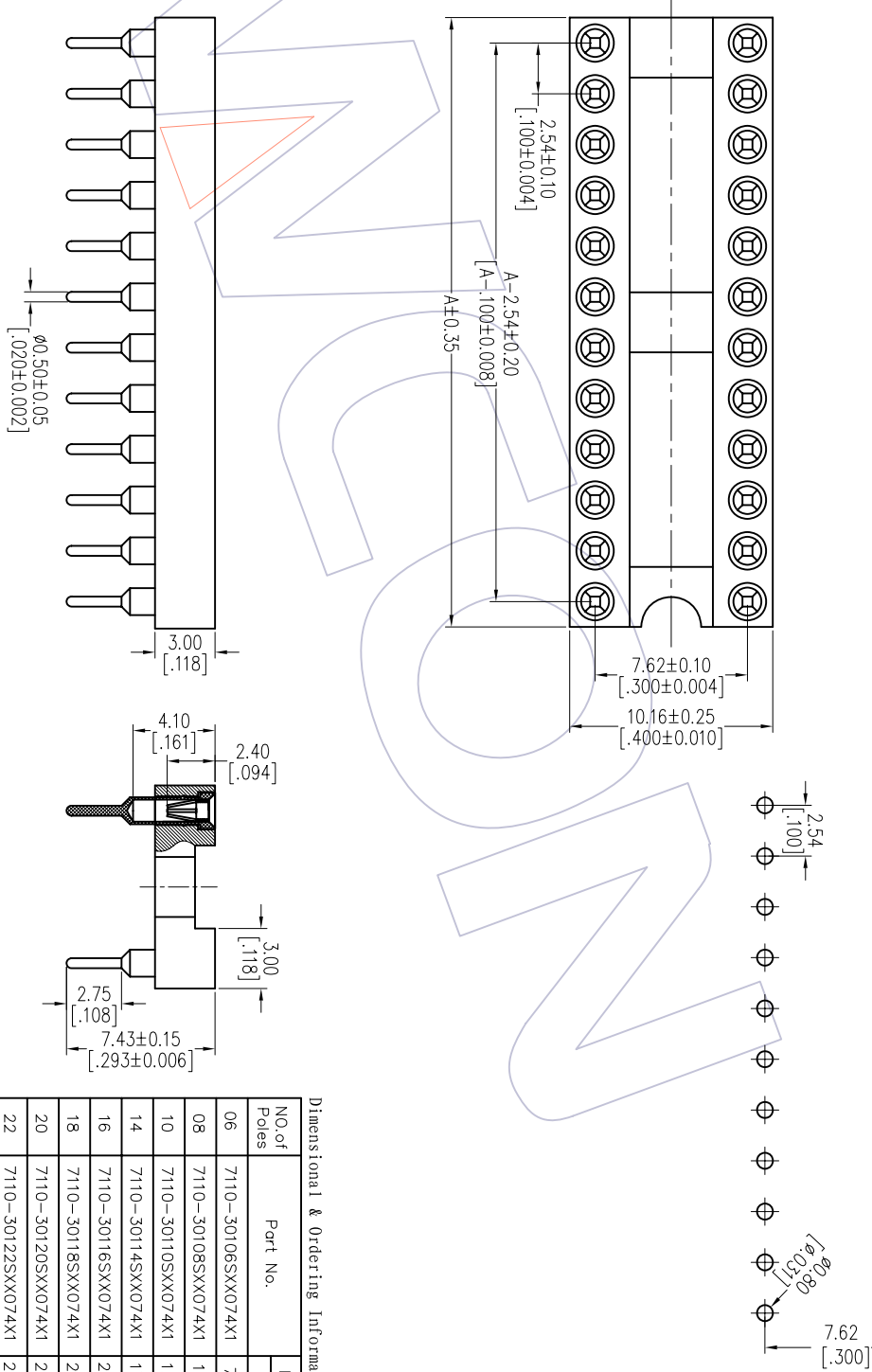
Current Rating: 1.0AMP
 Contact Resistance: 10m Ω Max
 Dielectric Strength: Min 1000Vrms
 Mechanical Life: Min 100 cycles
 Mating Pin: φ0.40 to φ0.56mm
 Forces: (polished steel gauge φ0.43mm)
 Insertion: 200g Max/Pin, Withdrawal: 60g Min/Pin
 Operation Temperature: -40°C to +105°C

Sleeve: Brass CuZn36Pb3(C36000), Sn over Ni
 Contact Clip(4 finger): BeCu(C17200), Au or Sn over Ni
 Insulator Material: PPS+30%G.F.(UL94V-0)
 06P~18P Insulators without center bar
 20P~28P Insulators with center one bar

Ordering Information

7110-301 XX S XX 074 X 1

Row of Pitch No. of Pin Contact Plating Packing
 1=7.62mm See tab S0=Gold Flash/Tin T=Tube
 S3=10u"Gold/Tin A=Tray
 S4=15u"Gold/Tin
 S5=30u"Gold/Tin
 SN=Tin



Recommended P.C.B Layout(Top Side)
 (PCB BOARD TOLERANCE±0.05)



Dimensional & Ordering Information

NO of Poles	Part No.	Dim A
06	7110-30106SXX074X1	7.62
08	7110-30108SXX074X1	10.16
10	7110-30110SXX074X1	12.70
14	7110-30114SXX074X1	17.78
16	7110-30116SXX074X1	20.32
18	7110-30118SXX074X1	22.86
20	7110-30120SXX074X1	25.40
22	7110-30122SXX074X1	27.94
24	7110-30124SXX074X1	30.48
28	7110-30128SXX074X1	35.56

WCON

Http: www.wcon.com

WCON-Dongguan Tel: +86 769 85358920 Fax: +86 769 85358915 E-mail: sales@wcon.com
 WCON-Kunshan Tel: +86 512 57468408 Fax: +86 512 57468468 E-mail: sales@wcon.com

REV	DATE	MODIFICATION DESCRIPTION	CHANGE DIM	TOL
A0	2012/11/02	NEW	Angle	± 3°

OPERATION	DRAW	DATE	SCALE	FIT
XX ±0.40	JYHuogng	2012/11/02	UNIT mm	
XX ±0.25	CHECK	DATE	SIZE A4	
XX ±0.15	APPROVE	DATE	SHEET 1/1	
Angle			PROJ.	

PART NO.	SBB TAB
TITLE: 2.54mm IC SOCKET 180° IH=3.0 L=7.43	
Row of Pitch 7.62	
Customer NO.	