

HSF

TECHNICAL SPECS:

Current Rating: 3.0AMP
 Contact Resistance: 10m Ω Max
 Dielectric Strength: Min 1000Vrms
 Mechanical Life: Min 500 cycles
 Mating Pin: $\phi 0.40$ to $\phi 0.66$ mm or 0.50SQ
 Forces: (polished steel gauge $\phi 0.47$ mm)
 Insertion: 200g Max/Pin, Withdrawal: 60g Min/Pin
 Operation Temperature: -40°C to $+105^{\circ}\text{C}$

Sleeve: Brass CuZn36Pb3(C36000), Sn over Ni
 Contact Clip(4 finger): BeCu(C17200), Au or Sn over Ni
 Insulator Material: PPS+30%G.F(UL94V-0)

Ordering Information

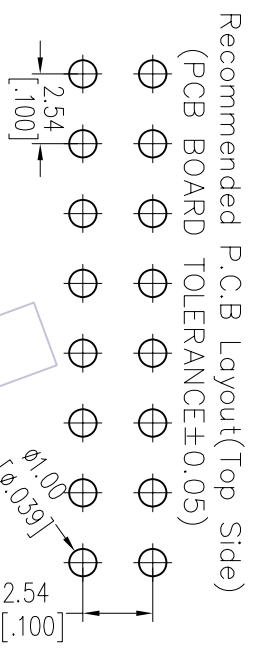
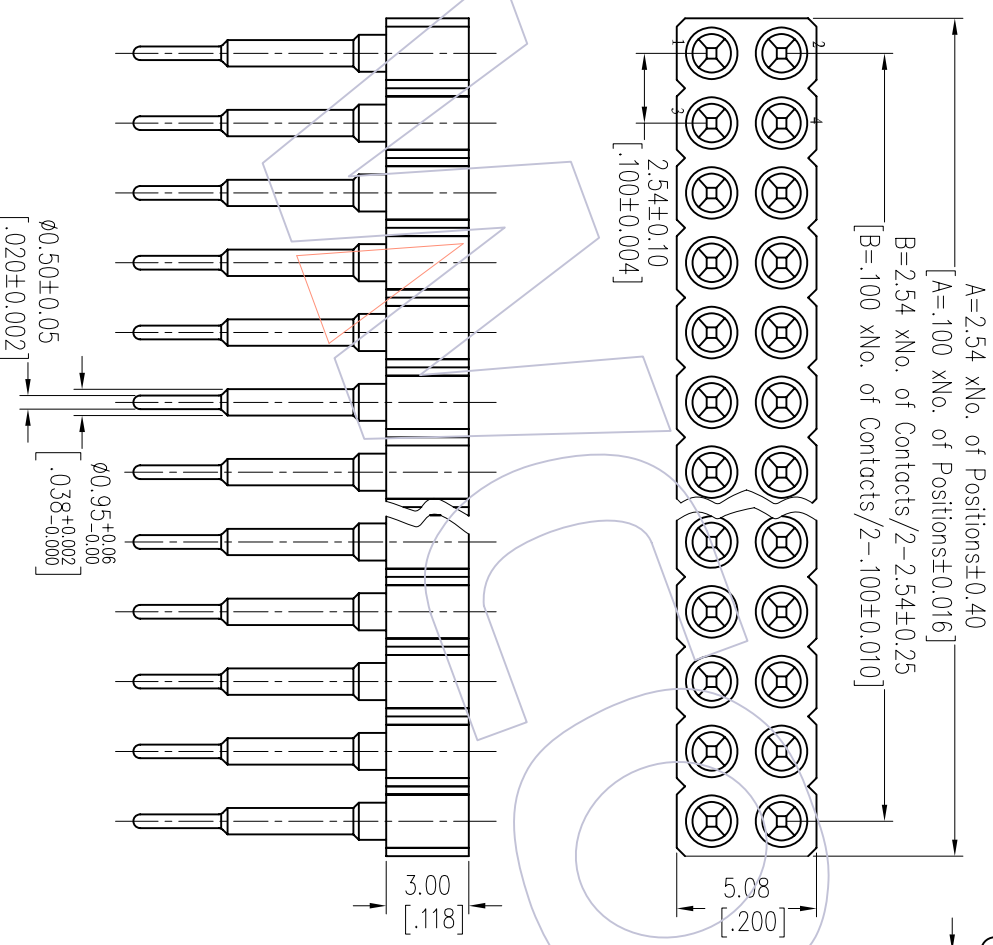
3520-302 XX S XX XXX X 1

No. of Pin
2-50PIN

Contact Plating
 S0=Gold Flash/Tin
 S3=100% Gold/Tin
 S4=100% Gold/Tin
 S5=300% Gold/Tin
 SN=1mm

Packing
 A=Tray
 T=Tube

Item	Pitch	Mating
Standard	2.54	3510
Alternate		



Pin Long Code: XXX	Dim "L"	Part No.
102	7.0	3520-30XXXXSSX102X1
112	8.0	3520-30XXXXSSX112X1
122	9.0	3520-30XXXXSSX122X1
132	10.0	3520-30XXXXSSX132X1
142	11.0	3520-30XXXXSSX142X1
152	12.0	3520-30XXXXSSX152X1
162	13.0	3520-30XXXXSSX162X1
182	15.0	3520-30XXXXSSX182X1

OPERATION	DRAW	DATE	SCALE	FIT	PART NO.
XX	JYHuang	2012/10/18	mm	A4	3520-302XXXXXXX1
XX	CHECK	DATE	SIZE	SHEET	TITLE:
X.XXX	± 0.15	± 3°	1/1	Customer NO.	2.54mm MACHINED FEMALE HEADER DUAL ROW 180° H=3.00
ANGLE	TOL	APPROVE	PROJ.		
CHANGE					
REV	DATE	MODIFICATION DESCRIPTION			
A0	2012/10/18	NEW			

WCON

Http: www.wcon.com

WCON-Dongguan
 Tel: +86 769 85358920
 Fax: +86 769 85358915
 E-mail: sales@wcon.com

WCON-Kunshan
 Tel: +86 512 57468408
 Fax: +86 512 57468468
 E-mail: sales@wcon.com